



Alto Line

Double Convector Type 22

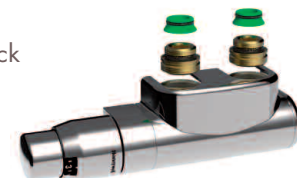
Height mm	Length mm	Henrad Code	Heat emissions	
			Watts	Btu/hr
1600	300	3162203	1026	3501
	500	3162205	1710	5835
1800	400	3182204	1476	5036
	500	3182205	1845	6295
	600	3182206	2214	7554
2000	400	3202204	1588	5405
	500	3202205	1980	6756
	600	3202206	2376	8107

Btu/hr @ $\Delta t 50^{\circ}\text{C}$



For technical and installation information
visit our website www.henrad.co.uk/downloads

Centre Tap TRV
Available from stock



UIN	Henrad Description
14531310	Centre Tap TRV Straight White - 10mm
14531312	Centre Tap TRV Straight White - 1/2in
14531315	Centre Tap TRV Straight White - 15mm
14531410	Centre Tap TRV Straight Chrome - 10mm
14531412	Centre Tap TRV Straight Chrome - 1/2in
14531415	Centre Tap TRV Straight Chrome - 15mm
14531510	Centre Tap TRV Angled L White - 10mm
14531512	Centre Tap TRV Angled L White - 1/2mm
14531515	Centre Tap TRV Angled L White - 15mm
14531610	Centre Tap TRV Angled L Chrome - 10mm
14531612	Centre Tap TRV Angled L Chrome - 1/2mm
14531615	Centre Tap TRV Angled L Chrome - 15mm

Technical information

Testing and Operating Pressures

Henrad Alto Line has been independently tested to ensure these radiators perform to a maximum working pressure of 10.0 bar.

Connections

Henrad Alto Line has 6 x 1/2" BSP connections as standard.

Paint Process

Two coat paint process, each Henrad radiator is subjected to a multi-stage cleaning and paint process.

The final powder coat is Traffic white (RAL 9016) which is stoved and cooled to give a perfect finish. All radiators are illustrated in Traffic white unless stated.

Water Treatment

Installation of the system should be properly flushed and fitted in accordance with the British Code of Practice for the Treatment of Water in Domestic Hot Water Central Heating Systems.

Warranty

Henrad Alto Line comes with a 5 year manufacturer's warranty.

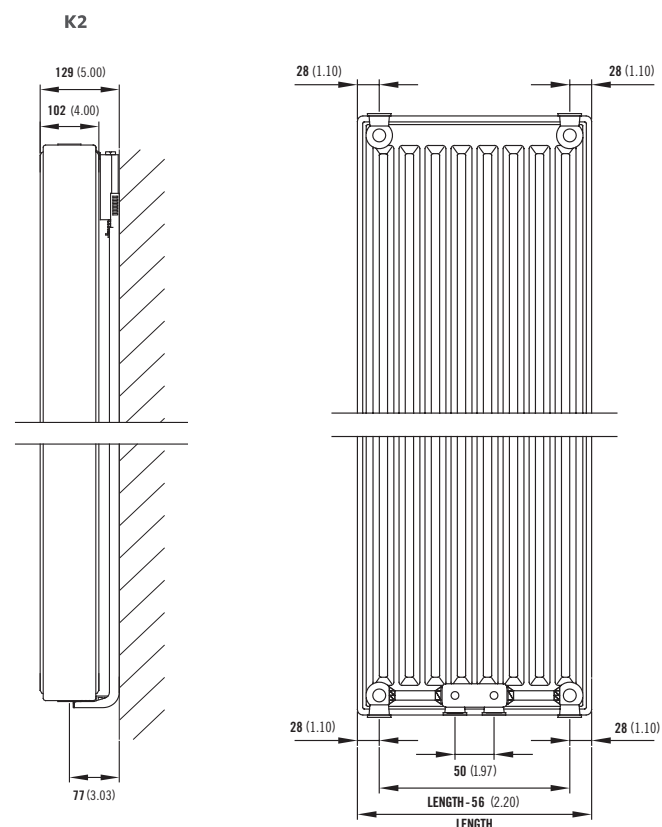
Henrad (UK) Limited, Marriott Road,
Mexborough, South Yorkshire S64 8BN.
Telephone: 0800 876 6813

www.henrad.co.uk

Henrad Alto Line

Wall Mounting and Lug Information

All dimensions in mm. inches in brackets.



Mounting Brackets

All dimensions in mm.

Height	H2	H3	H4
1600	89	749	1409
1800	89	849	1609
2000	89	949	1809

